

This map is reproduced from Ordnance Survey material with the permission of Ordnance Survey on behalf of the Controller of Her Majesty's Stationery Office © Crown copyright. Unauthorised reproduction infringes Crown copyright and may lead to prosecution or civil proceedings. Forest of Dean District Council. 100019102, (2008).

Project- GLOUCESTERSHIRE STRATEGIC FLOOD RISK ASSESSMENT

Tile B22:- STRATEGIC FLOOD RISK MAP SHOWING FLOODING FROM ALL SOURCES FOREST OF DEAN DISTRICT COUNCIL

Rev.	By	Date	Description
A	MJ Grogan	12/08/08	Canal embankments and associated residual risk added

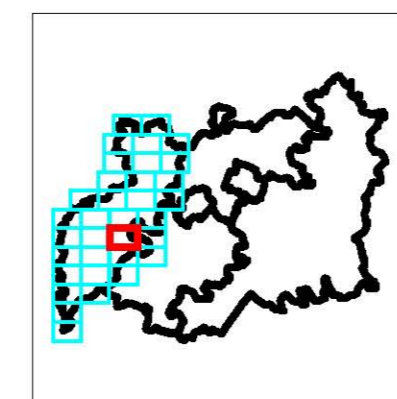
Drawn By :- A J Bryan
 Checked By :- B L Dunn
 Approved By :- J R Parkin

Revision A
 Status FINAL

Drawing Scale :- 1:10,000
 Sheet No. :- 22 of 34
 Plot Scale :- 1:1 @ A1

Drawing No. :- WB/GLOS/DRAWING - 002
 Date :- 26 March 2008
 Issuing Office :- Birmingham

Key Plan:



Legend:-

- Council Boundary
- Main River Centreline
- Flood Zone 2 (Medium Probability)
- Flood Zone 3a (High Probability)
- Flood Zone 3b (Functional Floodplain)
- Recorded Flooding - Impounded Water Bodies
- Recorded Flooding - Artificial Drainage
- Recorded Flooding - Surface Water
- Recorded Flooding - Fluvial
- Recorded Flooding - Unknown
- Canal Embankments
- Residual Risk

NB: The Environment Agency has not produced Flood Zones for catchments with an area less than 3km². In such instances fluvial flood risk is present but is not illustrated

(Flood Zone 3b is shown in light blue where no data exists to differentiate)



PPS25: Flood Zones Definition

Flood Risk Vulnerability Classification	Essential Infrastructure	Water Compatible	Highly Vulnerable	Most Vulnerable	Less Vulnerable
Zone 1	✓	✓	✓	✓	✓
Zone 2	✓	✓	Exception Test Required	✓	✓
Zone 3a	Exception Test Required	✓	✗	Exception Test Required	✓
Zone 3b (Functional Floodplain)	Exception Test Required	✓	✗	✗	✗

✓ : Development is appropriate
 ✗ : Development should not be permitted

PPS25: Flood Risk Vulnerability and Flood Zone "Compatibility"

Flood Risk Vulnerability Classification	Essential Infrastructure	Water Compatible	Highly Vulnerable	Most Vulnerable	Less Vulnerable
Zone 1	✓	✓	✓	✓	✓
Zone 2	✓	✓	Exception Test Required	✓	✓
Zone 3a	Exception Test Required	✓	✗	Exception Test Required	✓
Zone 3b (Functional Floodplain)	Exception Test Required	✓	✗	✗	✗

✓ : Development is appropriate
 ✗ : Development should not be permitted

PPS25: Flood Risk Vulnerability Classification

Essential Infrastructure	- Essential transport infrastructure (including mass evacuation routes) which has to cross the area at risk, and strategic utility infrastructure, including electricity generating power stations and grid and primary substations.
Highly Vulnerable	- Police stations, Ambulance stations and Fire stations and Command Centres and telecommunications installations required to be operational during flooding. - Emergency disposal points. - Basement dwellings. - Caravans, mobile homes and park homes intended for permanent residential use. - Installations requiring hazardous substances consent 10
More Vulnerable	- Hospitals. - Residential institutions such as residential care homes, children's homes, social services homes, prisons and hostels. - Buildings used for dwelling houses, student halls of residence, dining establishments, nightclubs, and hotels. - Non-residential uses for health services, nurseries and educational establishments. - Landfill and sites used for waste management facilities for hazardous waste 20. - Sites used for holiday or short-let caravans and camping, subject to a specific warning and evacuation plan.
Less Vulnerable	- Buildings used for shops, financial, professional and other services, restaurants and cafes, food takeaways, offices, general industry, storage and distribution, non-residential institutions not included in 'more vulnerable', and assembly and leisure. - Land and buildings used for agriculture and forestry. - Waste treatment (except landfill and hazardous waste facilities). - Minerals working and processing (except for sand and gravel working). - Water treatment plants. - Sewage treatment plants (if adequate pollution control measures are in place).
Water-compatible Development	- Flood control infrastructure. - Water transmission infrastructure and pumping stations. - Sewage transmission infrastructure and pumping stations. - Sand and gravel workings. - Docks, marinas and wharves. - Navigation facilities. - MCO defence installations. - Ship building, repairing and dismantling, dockside fish processing and refrigeration and compatible activities requiring a waterside location. - Water-based recreation (including sleeping accommodation). - Lifeguard and coastguard stations. - Amenity open space, nature conservation and biodiversity, outdoor sports and recreation and essential facilities such as changing rooms. - Essential ancillary sleeping or residential accommodation for staff required by uses in this category, subject to a specific warning and evacuation plan.