

This map is reproduced from Ordnance Survey material with the permission of Ordnance Survey on behalf of the Controller of Her Majesty's Stationery Office © Crown copyright. Unauthorised reproduction infringes Crown copyright and may lead to prosecution or civil proceedings. Forest of Dean District Council. 100019102, (2008).

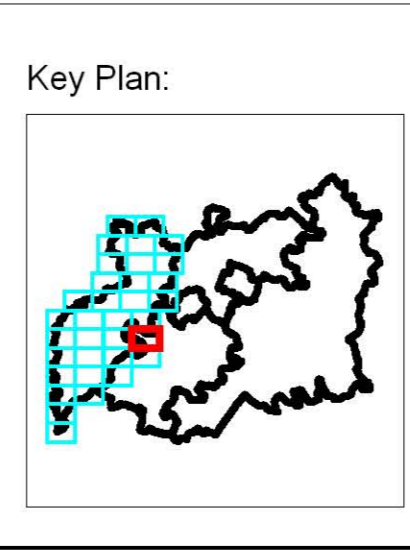
**Project:- GLOUCESTERSHIRE STRATEGIC FLOOD RISK ASSESSMENT**

**Tile B23:- STRATEGIC FLOOD RISK MAP SHOWING FLOODING FROM ALL SOURCES FOREST OF DEAN DISTRICT COUNCIL**

Rev.	By	Date	Description
A	MJ Grogan	12/08/08	Canal embankments and associated residual risk added

Drawn By	:- A J Bryan	Revision	A	Drawing Scale	:- 1:10,000	Drawing No.	:- WB/GLOS/DRAWING - 002
Checked By	:- B L Dunn	Status	FINAL	Sheet No.	:- 23 of 34	Date	:- 26 March 2008
Approved By	:- J R Parkin	Plot Scale	:- 1:1 @ A1	Issuing Office	:- Birmingham		



**Legend:-**

	Council Boundary		Recorded Flooding - Impounded Water Bodies
	Main River Centreline		Recorded Flooding - Artificial Drainage
	Flood Zone 2 (Medium Probability)		Recorded Flooding - Surface Water
	Flood Zone 3a (High Probability)		Recorded Flooding - Fluvial
	Flood Zone 3b (Functional Floodplain)		Recorded Flooding - Unknown
			Canal Embankments
			Residual Risk

Forest of Dean  
Council Offices  
High Street  
Coleford  
Gloucestershire  
GL16 8HG

**Halcrow**  
www.halcrow.com  
Lyndon House  
62 Hagley Road  
Edgbaston  
Birmingham  
B16 8PE

**PPS25: Flood Zones Definition**

Flood Risk Vulnerability Classification	Essential Infrastructure	Water Compatible	Highly Vulnerable	More Vulnerable	Less Vulnerable
Zone 1	✓	✓	✓	✓	✓
Zone 2	✓	✓	Exception Test Required	✓	✓
Zone 3a	Exception Test Required	✓	✗	Exception Test Required	✓
Zone 3b (Functional Floodplain)	Exception Test Required	✓	✗	✗	✗

✓ : Development is appropriate  
 ✗ : Development should not be permitted

**PPS25: Flood Risk Vulnerability and Flood Zone "Compatibility"**

Flood Risk Vulnerability Classification	Essential Infrastructure	Water Compatible	Highly Vulnerable	More Vulnerable	Less Vulnerable
Zone 1	✓	✓	✓	✓	✓
Zone 2	✓	✓	Exception Test Required	✓	✓
Zone 3a	Exception Test Required	✓	✗	Exception Test Required	✓
Zone 3b (Functional Floodplain)	Exception Test Required	✓	✗	✗	✗

**PPS25: Flood Risk Vulnerability Classification**

<b>Essential Infrastructure</b>	<ul style="list-style-type: none"> <li>Essential transport infrastructure (including mass evacuation routes) which has to cross the area at risk, and strategic utility infrastructure, including electricity generating power stations and grid and primary substations.</li> </ul>
<b>Highly Vulnerable</b>	<ul style="list-style-type: none"> <li>Police stations, Ambulance stations and Fire stations and Command Centres and Telecommunications installations required to be operational during flooding.</li> <li>Emergency disposal points.</li> <li>Boarding dwellings.</li> <li>Caravans, mobile homes and park homes intended for permanent residential use.</li> <li>Installations requiring hazardous substances consent 19.</li> </ul>
<b>More Vulnerable</b>	<ul style="list-style-type: none"> <li>Hospitals.</li> <li>Residential institutions such as residential care homes, children's homes, social services homes, prisons and hostels.</li> <li>Buildings used for dwelling houses, student halls of residence, drinking establishments, nightclubs, and hotels.</li> <li>Non-residential uses for health services, nurseries and educational establishments.</li> <li>Landfill and sites used for waste management facilities for hazardous waste 20.</li> <li>Sites used for holiday or short-let caravans and camping, subject to a specific warning and evacuation plan.</li> </ul>
<b>Less Vulnerable</b>	<ul style="list-style-type: none"> <li>Buildings used for shops, financial, professional and other services, restaurants and cafes, food takeaways, offices, general industry storage and distribution, non-residential institutions not included in 'more vulnerable' and assembly and leisure.</li> <li>Land and buildings used for agriculture and forestry.</li> <li>Waste treatment (except landfill and hazardous waste facilities).</li> <li>Minerals working and processing (except for sand and gravel working).</li> <li>Water treatment plants.</li> <li>Sewage treatment plants (if adequate pollution control measures are in place).</li> </ul>
<b>Water-compatible Development</b>	<ul style="list-style-type: none"> <li>Flood control infrastructure.</li> <li>Water transmission infrastructure and pumping stations.</li> <li>Sewage transmission infrastructure and pumping stations.</li> <li>Sand and gravel workings.</li> <li>Docks, marinas and wharves.</li> <li>Navigation facilities.</li> <li>MCO defence installations.</li> <li>Ship building, repairing and dismantling, dockside fish processing and refrigeration and compatible activities requiring a waterside location.</li> <li>Water-based recreation (including sleeping accommodation).</li> <li>Lifeguard and coastguard stations.</li> <li>Amenity open space, nature conservation and biodiversity, outdoor sports and recreation and essential facilities such as changing rooms.</li> <li>Essential ancillary sleeping or residential accommodation for staff required by uses in this category, subject to a specific warning and evacuation plan.</li> </ul>