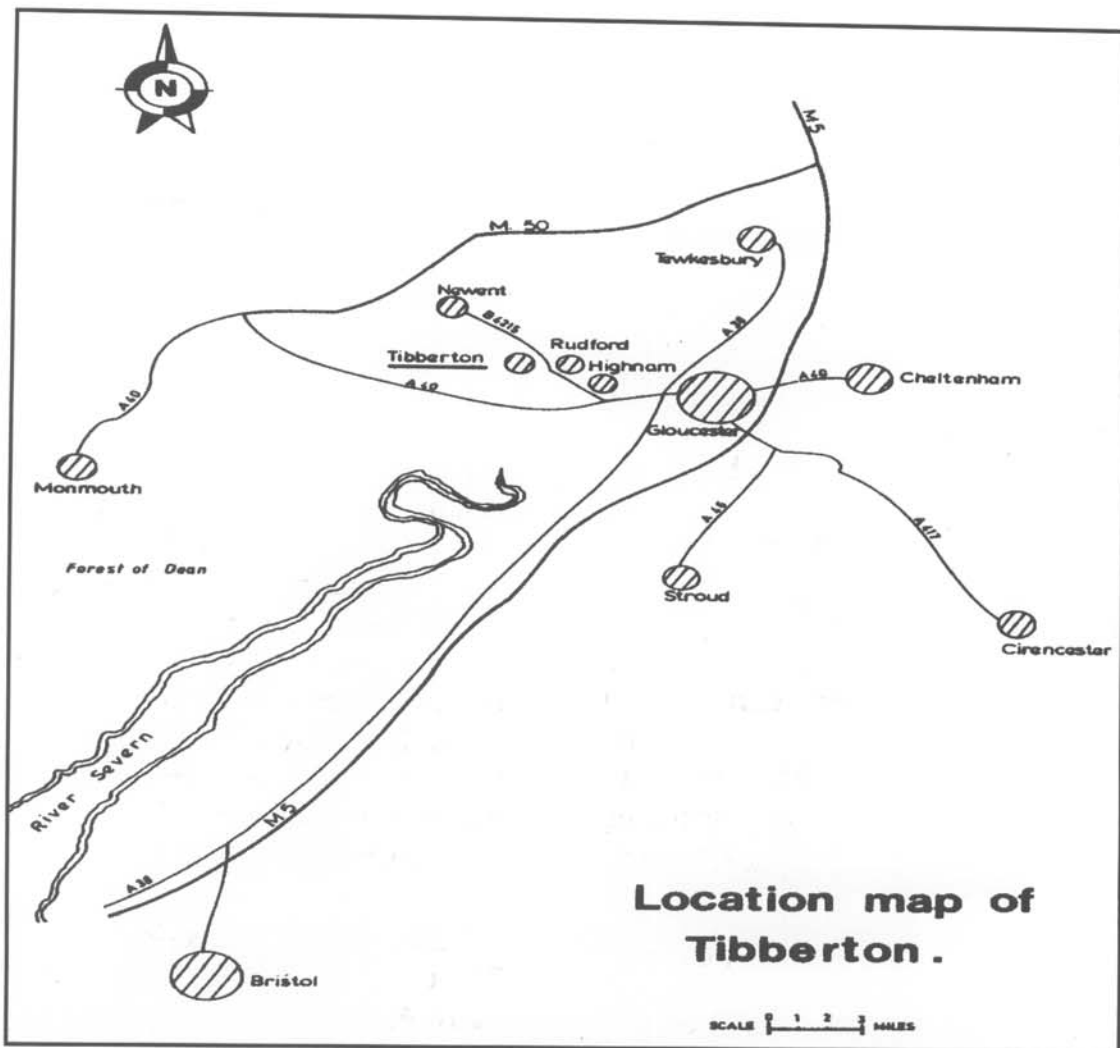


*Village  
Appraisal*

*Tibberton  
Gloucestershire*



### Location map of Tibberton .

Tibberton lies in close proximity to the Forest of Dean, nestling at the foot of May Hill. It is six miles northwest of Gloucester with easy access to Cheltenham, the M5 and M50 motorways. The small market town of Newent is 5 miles to the West.

The Parish is 1,406 acres in area and has a population of approximately 650 inhabitants. Tibberton Court and the Church lie on a slight rise above the rest of the Village, which is bordered by the Wynford Brook, the Tibberton meadows and the Village of Rudford, scene of the Battle of Barbers Bridge during the siege of Gloucester in 1643.

The Village has no centre but the developments of Orchard Rise and Muzzle Patch house the majority of the residents.

The Wysis Way, a long distance footpath from the Wye to the Cotswolds, passes through the Village.



# TIBBERTON

village appraisal 2002

## Foreword

In October 2002 a team of local volunteers undertook, in partnership with the Parish Council, a survey of life in Tibberton as part of the National Vital Villages Programme. There were two questionnaires: one to be completed by someone representing the whole household and a separate questionnaire for each young person aged 7-18. The household questionnaire contained 71 questions categorised into 11 sections including environment, transport and highways, services, education, and leisure.

A total of 181 out of 248 household questionnaires were returned. This represents nearly 73% of households, a higher than average response rate compared with other parishes in the county who have taken part in similar surveys, and expressing a true reflection of local opinion. The number of Young Peoples' questionnaires returned was 51, which represented only 45% of eligible young people.

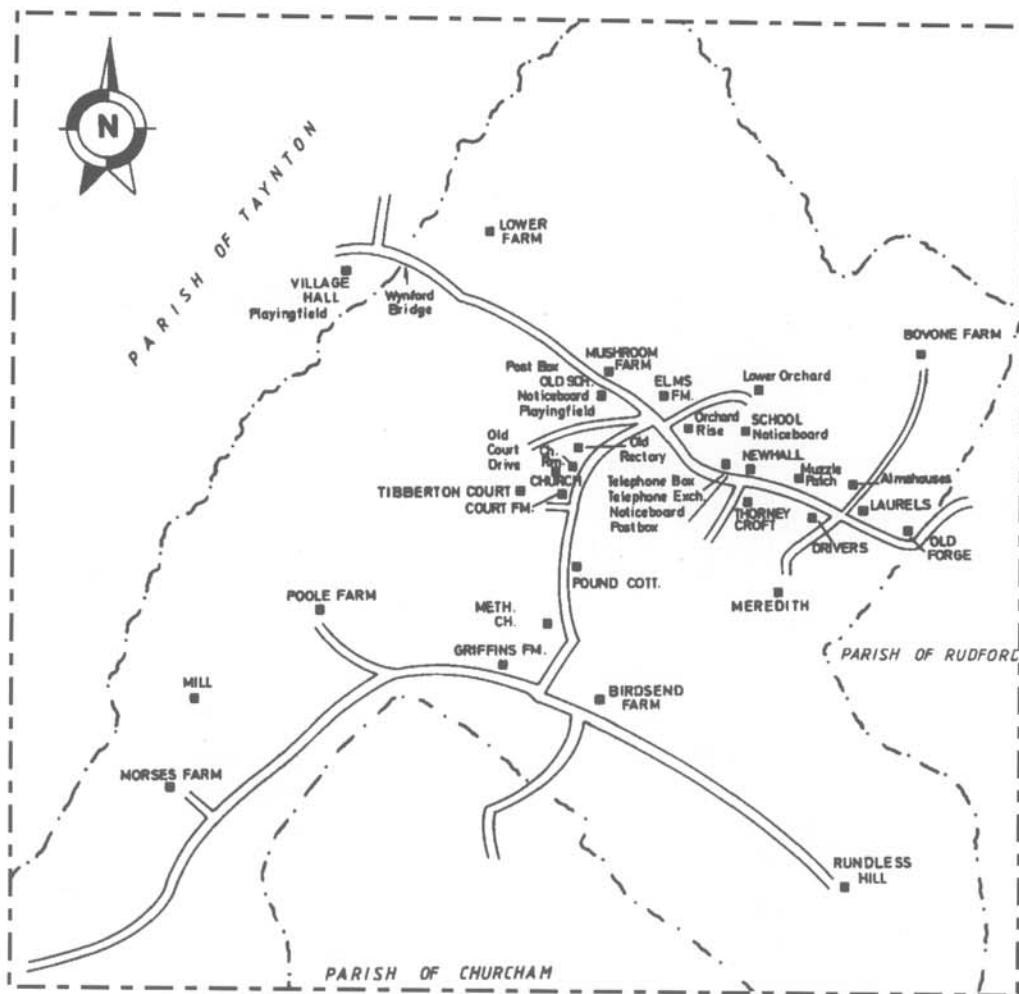
An analysis of the responses was carried out by the Gloucestershire Rural Community Council, which enabled the Steering Group to consider the results and produce this report.

A number of proposals for improvements to the facilities have already been implemented by a variety of organisations. These have been included in the 'Action 2003' section (page 11) at the end of the report, followed by the 'Keeping Your Ideas Under Review', ideas, which were highlighted in the survey and may well improve the quality of life and level of facilities in the Village.

Members of the Steering Group for the Tibberton Village Appraisal 2002 were: - Sally Ashwell, Carole Bevan, Joan Bloore, Mike Chivers, Gabby Heraghty, Moira Norwood, Dennis Nutting, David Rowe, Harvey Ryder. They represent a cross-section of the community and include: a senior citizen, a teenager, members of local groups, a long-standing and a new resident.

*The Steering Group wishes to thank everyone who completed the questionnaire.*

The Countryside Agency, Gloucestershire Rural Community Council, and Tibberton Parish Council, support the project.



## Aims of the Appraisal:

*To agree what is liked about the Village*

*To suggest the changes necessary to make Tibberton more pleasant for all inhabitants*

*To enable the parishioners to draw together as a community and facilitate activities and actions for the common good*

*To provide the Parish Council with information to complete the Parish Plan*



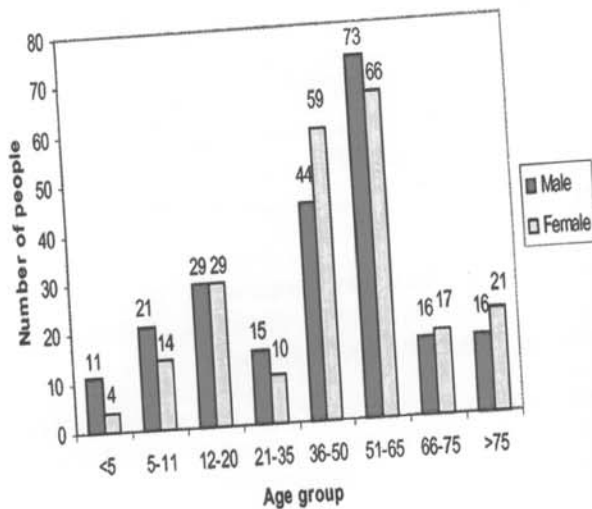
# Appraisal Results

## General information

There were 447 people among the 181 households who responded to the survey. This gives an average of 2.5 people to each household. The table and chart below show their age and gender. (The numbers shown add to 445 rather than 447 since the age and gender of 2 people are unknown).

The table shows that there are roughly equal proportions of males (51%) to females (49%). The gender balance differs within different age groups as can be seen from the chart. The younger age groups generally have a higher male : female ratio than the older age groups, although there are exceptions (e.g. 51-65 year olds). The table also shows that 24% are under 21 and 15% over 65.

Population in Age groups: -



	Male	Female	Total	Percentage
<b>Under 5</b>	11	4	15	3%
<b>5-11</b>	21	14	35	8%
<b>12-20</b>	29	29	58	13%
<b>21-35</b>	15	10	25	6%
<b>36-50</b>	44	59	103	23%
<b>51-65</b>	73	66	139	31%
<b>66-75</b>	16	17	33	7%
<b>Over 75</b>	16	21	37	8%
<b>Total</b>	225	220	445	
<b>Percentage</b>	51%	49%		

It was not possible to compare the age structure with that of the previous appraisal of 1990 due to the age bandings but the average age of 75+ has increased by 5%.  
Two thirds of respondents have lived in the Village for over 10 years; 92% are homeowners.

Indications as to why people came to live in the Village were: -

Rural aspect	51%
Employment	29%
Retirement	22%
Marriage	12%
Education	10%
Birthplace	7%



# Housing



*Thorneycoft Lane*

The vast majority of homes are owner occupied:

Privately owned	92%
Privately rented	6%
Council rented	2%

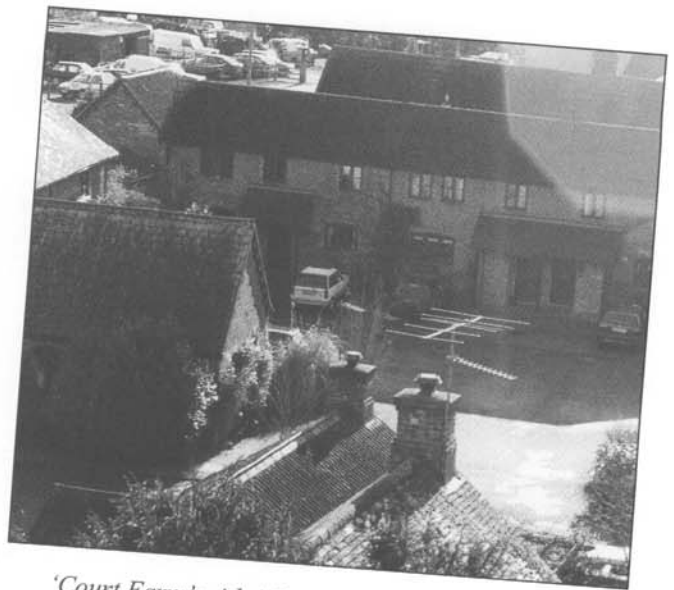
*N.B. All Council Housing has now been transferred to the Forest of Dean Housing Association.*

If any development were to be considered, "Infill" and "low cost housing" were the most popular options favoured by 75% of those who gave an opinion.

The majority felt no further housing was needed.



*Orchard Rise from the Church Tower 2001*



*'Court Farm' with 'Bucklands' in the background*

# Employment

The percentage of over 18's employed or self-employed is 62%.

Working full-time	35%
Self-employed	11%
Part-time	17%
Retired	26%
Looking for work	2%
Student	4%
House-parent	3%
Other	2%

There are 16 businesses operating in Tibberton, farming being the most common, followed by garden and plant-related businesses.

Suggestions were submitted by 42 households as to how action could be taken to improve employment opportunities locally – childminding, business units, and a Village shop.

Some households felt that a small rural village like Tibberton is not suited to employment opportunities, which would lead to increased traffic.

# Environment

The question on footpaths produced a large response.

39% said they use the footpaths *often*  
50% said they use the footpaths *sometimes*  
11% said they *never* use the footpaths

The main comments from the appraisal were: -

- The need for a local footpath map
- To reduce dog fouling on footpaths

Of those who gave an opinion 90% considered the paths well signed, and 76% that they were well maintained.

Only 23% of households favoured the re-introduction of regular guided walks.

Opinion on "street furniture" was divided. The most popular of the items listed were, benches (53%) "doggie bins" (64%) and a central, Village name sign (62% in favour).

The particular features within the Village that householders would like to see most preserved or improved were:-

- The Village pond at the junction of Huntley Road
- The Telephone kiosk
- Retention of a rural, undeveloped Parish with a Village atmosphere
- Trees and hedges
- Orchard Rise bank
- The Mill, at Morses Farm, Huntley Road

To further improve the environment, the most popular suggestions were the planting of trees and natural bulbs.

Only 20 households would be interested in joining an action group for the "Best Kept Village" competition.

---

## When asked the question

*"Are there any particular features within the Village that you consider to be an eyesore?"*

35% of all 181 households ticked YES.

Specified features were:

- Telephone exchange area (fence, gravel parking etc)
- Orchard Rise surface/litter bins
- Felled copse, Huntley Road

---

The recycling facilities situated at the Village Hall are used by 73% of respondents, but it was felt by many that the bins should be emptied more often.



*Recycling bins situated at the Village Hall*

Clothes and plastic were the most common suggestions for additional recycling facilities.

# Transport and Highways

It was established that 96% of households have at least one car and 61% have at least two.

Other forms of personal transport used by individual households include: -

Bicycle	45%
Motorbike/moped	10%

Only 13% of households claimed to use the bus service, daily or weekly.

The most common reasons for not using the service were: -

- Access to a car
- The timetable, which was felt to be unsuitable

Only 12% of participants said they would be willing to help with a 'community car service'.

Speeding traffic through the Village concerned 75% of all 181 households.

Sixty-one percent of respondents were dissatisfied with the general state of the roads and pavements in the Village due to: -

**Potholes** - Orchard Rise; Meredith / Buttermilk Lane; Huntley Road; and around various manhole covers throughout the Village.

**Road surfaces** - Orchard Rise; Huntley Road junction.

**Lack of pavements** - Old Forge to Muzzle Patch; New Hall to Bovone Lane; Court Pitch; Court Lodge to Old School.

**Poor road drainage** - Court Pitch.



*Bovone/Meredith crossroads*

## **Traffic hazards.**

A significant number (65%) of respondents highlighted speeding traffic and danger spots for either pedestrians or road users: -

**Blind/sharp corners:** With poor visibility: The Forge; Bovone Lane; Lowlands; Methodist Church.

**Difficult junctions:** Bovone/Meredith crossroads; Huntley Road junction.

**Narrow roads:** Drivers / Muzzle Patch; Court Pitch; Oak Tree Cottages.

**Parked cars:** Muzzle Patch; Orchard Rise; on pavements through the Village; just after the kennels and where off-road parking is available.

Twenty-two households had experienced parking problems outside their homes with parked vehicles being the most common reason. School times and people not using garages/car ports were also mentioned.

A number of suggestions were given by two thirds of households for improvements to the junction between Buttermilk Lane and the B4215, the most popular being: Traffic lights at peak times, a mini roundabout and road widening, allowing a number of further options.



## Services

Most participants answered this question with enthusiasm. Some comments were submitted and these are set out under the appropriate section.

	Satisfied	Not Satisfied
<b>Mobile phone reception</b> <i>Vodafone very poor; Orange dreadful; "no-go" area for BT mobiles</i>	<b>32%</b>	<b>68%</b>
<b>Street lighting</b> <i>A percentage wanted brighter street lighting. Other households felt there was too much lighting for a rural setting</i>	<b>70%</b>	<b>30%</b>
<b>Electricity</b> <i>Could improve, but better than it used to be</i>	<b>74%</b>	<b>26%</b>
<b>Paper delivery</b> <i>The lack of a Sunday paper delivery was mentioned by 13 participants</i>	<b>92%</b>	<b>8%</b>
<b>Postal service</b> <i>The post box at Griffins Farm needs replacing</i>	<b>93%</b>	<b>7%</b>
<b>Mobile library</b> <i>Parking places not prominent enough and, insufficient publicity</i>	<b>93%</b>	<b>7%</b>
<b>Refuse collection</b> <i>Pleased with "green" collection</i>	<b>94%</b>	<b>6%</b>
<b>Milk</b>	<b>97%</b>	<b>3%</b>
<b>Water</b>	<b>98%</b>	<b>2%</b>
<b>Public telephone</b> <i>'Keep the kiosk red!'</i>	<b>99%</b>	<b>1%</b>

Other services requested included mains gas, broadband, a shop, post office and a pub.

## Surgery

With no family practitioner surgeries held in the Village, the location of those used by residents are:

Newent	76%
Highnam	10%
Corse	8%
Gloucester	3%
Mitcheldean	3%

The majority of households find their surgery satisfactory. However, the most common reason for dissatisfaction is the difficulty of getting an appointment.

Six percent find difficulty in getting to the surgery or hospital.

## Tradespeople

Overall support for local and nearby tradespeople was shown to be excellent. Local businesses used were named by over 75% of respondents, the most common being E. Buckland & Sons, Bucklands, Farm Market / Shops and Nurseries (including Over, Barbers Bridge, Taynton, Trioscape & Wychwood) and Highnam Post Office and Stores.

## Post Offices used by households: -

Highnam	58%
Newent	29%
Gloucester	23%
Huntley	5%
Longhope	2%

## Police

The Police coverage of the Village satisfies 64% of those who gave an opinion. Many households commented, however, that they had never seen the Constabulary in the area.

Over a third of participants thought a greater police presence was needed and around a third wanted better consultation between the police and local people.

Only 40% were aware of the visiting Mobile Police Office, which visits the Village on a regular basis – afternoons and evenings during the summer and during the day in winter, parking either at Phelps Way or at the Telephone Exchange.

Only 25 households had visited the “Bobby Bus”.

Presented with a list of crimes and anti-social behaviour, the greatest concern was speeding traffic (75%) despite the 30mph introduced following the Appraisal of 1990.

Other concerns include:-

Theft / Burglary	47%
Litter	38%
Vandalism	35%
Teenage behaviour	31%

Drugs, drunkenness, unsafe areas and mugging concerned fewer than 10% and the other issues mentioned by respondents included dog fouling and microlights.

### Neighbourhood Watch

Most households indicated that they understood the role of the Neighbourhood Watch Scheme. Comments included a request for an up to date list of contacts and a suggestion for more publicity and liaison.



*Forest Of Dean Mobile Police Office at Orchard Rise*

## Social and Leisure

When asked where they find out about social activities taking place in the Village, 90% replied the “Village Link”, delivered monthly, free to each household.

The measure of usage of the facilities showed that generally they were all well used.

	OFTEN	SOME TIMES	NEVER
Village Hall	19%	57%	15%
Church Room	8%	36%	37%
Village Hall Playing Field	7%	24%	49%
Old School Playing Field	3%	7%	65%

Other areas / buildings, which participants would like to see used for leisure facilities:

- School
- School Field
- The field adjacent to the Old School to become a Village Green and playground.

A small number of respondents listed additional leisure, sport and social activities, which they would like to see take place, which ranged from a pub, playground, badminton, keep fit, skateboard / bike ramps and a bonfire night.

## Education

Twenty-nine households expressed satisfaction with both pre-school and primary education in the Village.



*'The Rhythm of Life' by Tibberton School*

A number of children attend other nurseries and schools.

	Tibberton	Out of Village
Toddler Group	67%	33%
Playgroup	75%	25%
Nursery	78%	22%
Primary School	70%	30%

Reasons for choosing facilities out of the Village were: -

- Continuity following a move to the Village
- The nursery doesn't cater for babies
- Better standards of primary education elsewhere

The majority of households with children at Secondary School send them to Newent Community School and 91% said that they were pleased with the school.

Parents were well satisfied with other Secondary Schools chosen for their opportunities and facilities.

## Information Technology

Seventy five percent of homes have a computer. A third of households, which only contain people over the age of 65 have a computer, compared with 90% of households containing at least one person aged 65 or under. All households with a child at Secondary School have a computer, as have the majority of those with a child at Primary School.

Sixty-one households expressed interest in computer training. Three people indicated that they were willing to help or organise with the training believing it would be beneficial to the Village and senior citizens especially.

A Village web site was favoured by 51%

## Adult Education

Adult Education facilities were requested by 31% of households, the suggestions were many and varied: art, languages, flower arranging, yoga, camcorder technique, crafts and wood carving being the most popular.



*'Holy Trinity' by Cath Perks*

# Religion



*The new Millennium Bell being wheeled into Holy Trinity Church*

Asked if the local places of worship meet the needs of the community:

91% said YES and 9% said NO.

*'But does the community make use of the local places of worship'* asked one respondent.

Respondents attending a place of worship in the Village: -

	Often	Sometimes	Never	No response
Holy Trinity	10%	47%	29%	14%
Methodist Church	2%	10%	40%	48%

# Parish Council

The percentage of respondents who claimed to know their Parish Councillor was 55%, a few replying 'some' or 'not all'.

Around a third have been to a Parish Council Meeting.

Tibberton Parish Council is allocated money through the Council Tax. Respondents were generally satisfied with the way that the money is spent:

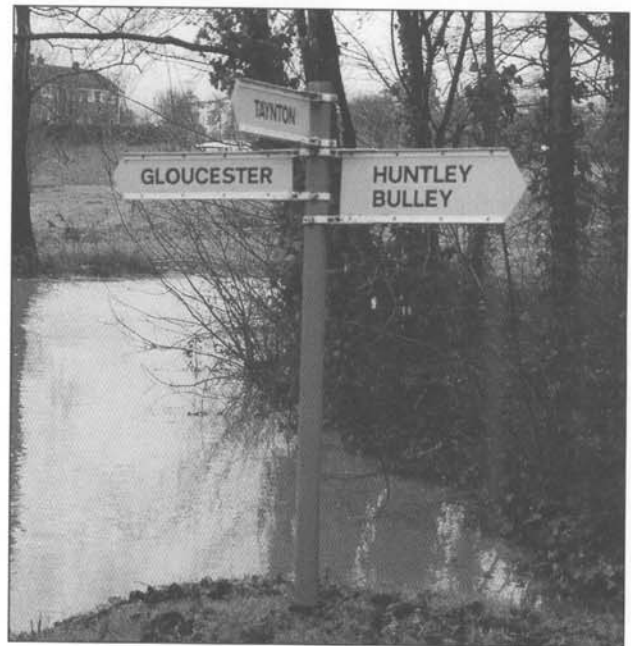
YES	NO	UNAWARE	NO RESPONSE
58%	6%	16%	20%

Suggestions were put forward by 30% of households as to what the money should be spent on in the Parish. They include: -

- Trees/shrubs/bulbs
- Playground/area for children
- Activities/facilities for young people (sports clubs, skateboard ramp)
- Improved Village signs

Minutes and accounts may be inspected by making an appointment with the Clerk to the Council: -

Mrs Dot Hicks, 30 Orchard Rise, Tibberton, Gloucester. GL19 3AT. Tel: (01452) 790506.



# Conclusion

On the whole the residents seem to be content with life in Tibberton.

The rural setting, the peace and quiet, the proximity to the city and towns and the friendly people were the most common likes. The lack of a pub, shop and a Post Office were common concerns by a number of residents.

The Appraisal highlighted dissatisfaction with mobile phone reception, the general state of roads, lack of pavements and concerns regarding speeding traffic.

## *Action 2003*

A number of actions have taken place within the last six months, many of which address some of the concerns highlighted in the questionnaire.

### ENVIRONMENT

- A footpath guide is currently being compiled by the Local History Group for publication by the end of the year
- The telephone exchange fence has been repaired and a new microwave dish fitted
- A recycling programme now includes a kerbside collection of green waste, newspapers, bottles and cans

### TRANSPORT AND HIGHWAYS

- Orchard Rise was resurfaced in October 2003
- The plum trees to the front of Orchard Rise have been removed as a safety measure
- CHECK SPEED 30 signs have been erected by the police in response to fears voiced about speeding traffic
- Visibility in Tibberton Lane in the area of Oak Tree Cottages has improved due to the removal of the hedge

### SERVICES

- A freestanding post box has replaced the wall-mounted box stolen from Griffins Farm
- The Neighbourhood Watch is receiving greater publicity with the distribution of names of all representatives
- The Rural Beat Officer, PC Simon Bailey, has been invited to keep in touch through contributions to the Village Link and to attend Parish Council meetings

### EDUCATION

- The Head Teacher of Tibberton Community Primary School is keen to make Information Technology equipment available to local residents

### WEBSITE

- The Village website [www.tibberton.org](http://www.tibberton.org) is currently being developed and is due for completion early in 2004 opening a new channel of communication for those interested in Village affairs



# *Keeping Your Ideas Under Review*

From the survey the following ideas were highlighted and are worthy of being kept under review.

## ENVIRONMENT

- ❑ Planting natural bulbs on top of Orchard Rise and in other areas of the Parish
- ❑ Preserving the pond area and surrounding land on the Huntley Road
- ❑ Providing benches in selected locations
- ❑ Replacing litter bins in a design more sympathetic to a rural Parish
- ❑ Addressing the problem of dog fouling
- ❑ Extending recycling facilities to include clothing and plastic banks

## TRANSPORT AND HIGHWAYS

- ❑ Consideration be given to signs "*Please drive carefully*" at the boundaries with Rudford and Taynton
- ❑ The Church/Methodist Church sign be relocated to be more visible
- ❑ The road sign at the bottom of Huntley Road be amended in order that 'HUNTLEY/BULLEY' can be read from both directions
- ❑ Careful consideration be given to a central Village sign

## SERVICES

- ❑ Ensure that the red telephone kiosk be retained and not replaced by a modern one



## *Young People's Report*

The Young Person's Questionnaire for completion by each young person aged 7 – 18 years contained a total of eighteen questions categorised into three sections:

Your plans for the future  
Leisure & transport  
Your environment

Fifty-one surveys were returned representing 45% of all those eligible to participate. (Population data taken from the Gloucestershire County Council website)

Apart from the question on gender, there were no tick boxes; instead, respondents were free to write anything they chose in reply to each question.

Age/gender of respondents:

Age	Gender		Total	Percentage %
	Male	Female		
7	1	0	1	2%
8	3	2	5	10%
9	3	2	5	10%
10	2	1	3	6%
11	1	6	7	14%
12	3	2	5	10%
13	3	3	6	12%
14	1	1	2	4%
15	1	5	2	12%
16	1	0	1	2%
17	2	8	10	20%
18	0	0	0	-
<b>Total</b>	<b>21</b>	<b>30</b>		
<b>%</b>	<b>41%</b>	<b>59%</b>		

Schools attended by respondents:

Tibberton Community Primary	12
Churcham	1
Highnam	2
St. Edward's Cheltenham	3
Newent Community	31

## Your Plans for the Future

The wishes of 7-15 year olds following GCSE's.

Sixth Form	55%
College	13%
Employment	11%
Don't know	21%

All respondents, 7-18 years, made their intentions known following the end of their formal education.

University	44%
Gap year	22%
Employment	11%
Don't know	23%

42% of the fifty young people stated that they would like to work locally.

Locally	42%
Abroad	14%
Away	6%
London	6%
Don't know	32%

## Leisure and Transport

Asked if there were enough things in the Village for young people to do, 83% said NO.

The most popular of the 69 suggestions put forward by 41 youngsters:

- A park / playground
- Provision for skateboarders
- A drama group
- A shop

- Sports clubs
- An art group
- A dance club

The young peoples' spare time is currently spent:

- Playing computer games
- Spending time with friends
- Watching TV

Thirty-nine respondents of the appraisal have 65 memberships of local clubs between them in the area.

*Twenty-three youngsters indicated membership of at least one sports related club.*

Tibberton Youth Club is attended by 41% of the respondents' eligible, i.e. those 11 years or over.

The means of transport used to get to the youth club and to other organised activities:

Car/Lift	61%
Walk	24%
Bike	11%
Bus	4%



*Youth Club activity*

## Your Environment

Three things in the Village troubled the young people:

- Poor street lighting
- Inadequate pavements
- Fast traffic

Those concerned about street lighting and inadequate pavements were predominantly female.

Asked if they felt involved and informed about local issues:

YES	NO
27%	59%

Of those who replied in the affirmative, one said he learned about things in the Youth Club, two mentioned the 'Village Link' and another replied 'As much as I want to be'.

The two best things about living in the Parish were listed as:

- Rural location (Countryside, fields, open space, walks, views)
- Peace and quiet

The worst things about residing here were listed as:

- Nothing or not enough to do
- Buses are too few and unreliable
- No shop
- No playground / park

The opportunity was given to the participants to suggest how things can be made better for young people in Tibberton. Forty-two youngsters put forward 54 ideas, over half of which fell into 4 categories:

- A playground / park
- More clubs / activities
- A shop
- A skateboard ramp

The percentage of young people prepared to join a team involved with fund raising for local amenities:

YES	NO	NO RESPONSE
51%	41%	8%

The final question was a 'fun' question- "If you had £1,000 to spend on activities for young people in Tibberton, what would you choose?"

Sixty-two suggestions were put forward, nearly half concerned just two issues:

- A playground / park (*Swings, benches, a climbing frame and a sheltered area*)
- Skateboard facilities (*Park / ramp*)



*Youth Club fund-raising car wash*

## *Keeping Your Ideas Under Review*

Responses to the survey indicate that, although the rural aspect of the area is enjoyed, a percentage of young people feel that there are not enough things for them to do in Tibberton.

From the survey the following ideas are worthy of being kept under review:-

- ❑ The drama group is re-formed
- ❑ An art group is set up
- ❑ A committee, with a percentage of teenage members, is formed to draw up an annual programme of special activities for young people
- ❑ Volunteers with differing interests, including dance and a variety of sports, are sought, to set up and run new clubs
- ❑ Local groups are asked for their support in the provision of equipment on the playing field and applications are made to grant making bodies
- ❑ Consideration is given to the placing of benches on both the Village Hall field and the field behind the old School

The Village Hall Committee has allocated a site on the playing field for a skateboard ramp.

+++++

A copy of the full reports, Parish Appraisal Tibberton 2002 Household / Young People's Report can be obtained from: The Gloucestershire Rural Community Council, Community House, 15, College Green, Gloucester. GL1 2LZ. Tel: (01452) 528491

This project was supported by:

